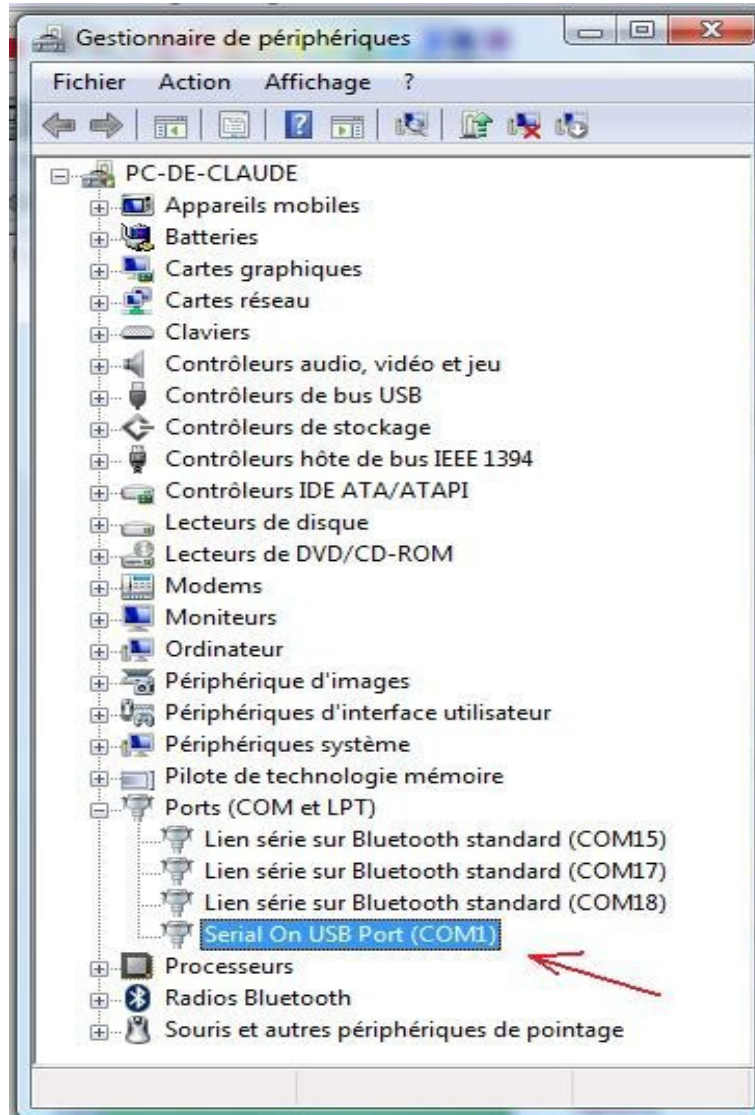


# TRONISOFT PAPYWIZARD INTERFACE KIT 9751

## SETTING-UP THE BT ADAPTOR FOR PAPYWIZARD/MERLIN USAGE

If you have access to a Windows PC then follow the instructions here to change the configuration of the BTLINK RS232-Bluetooth adapter from its factory defaults to the configuration adapted for the Merlin/Orion mount and Papywizard.

(The same procedure is applicable for a Windows PC equipped only with USB ports and no Serial port, in this case you should use a « Serial to USB » adapter; please read the Serial port number via the control panel, in this case this is « COM1 »)



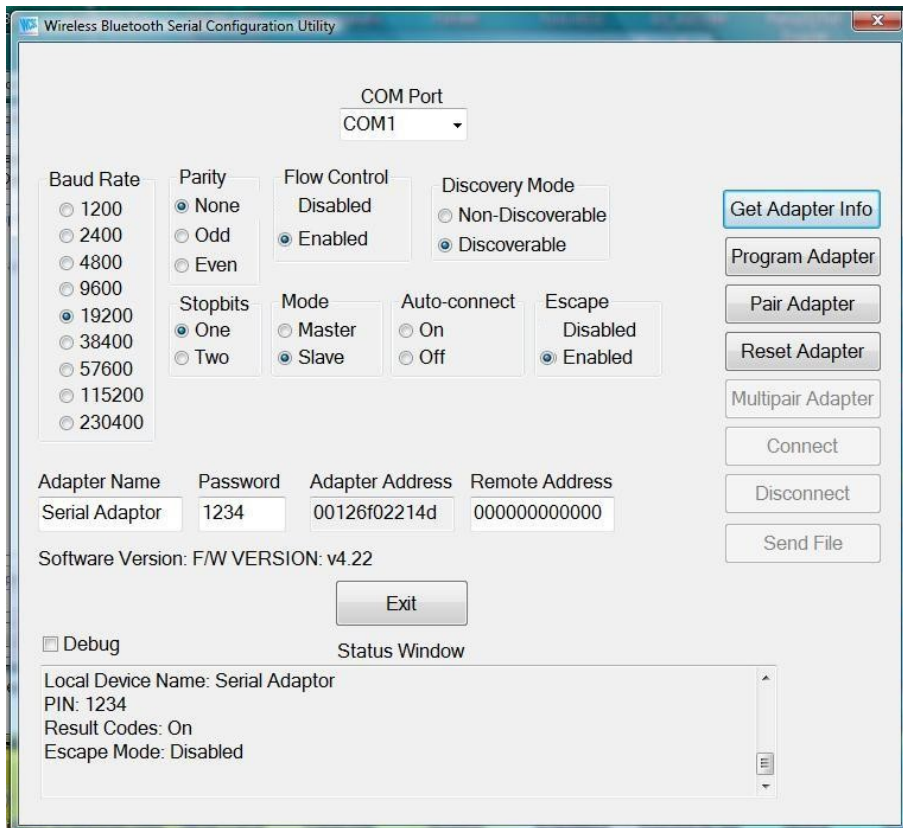
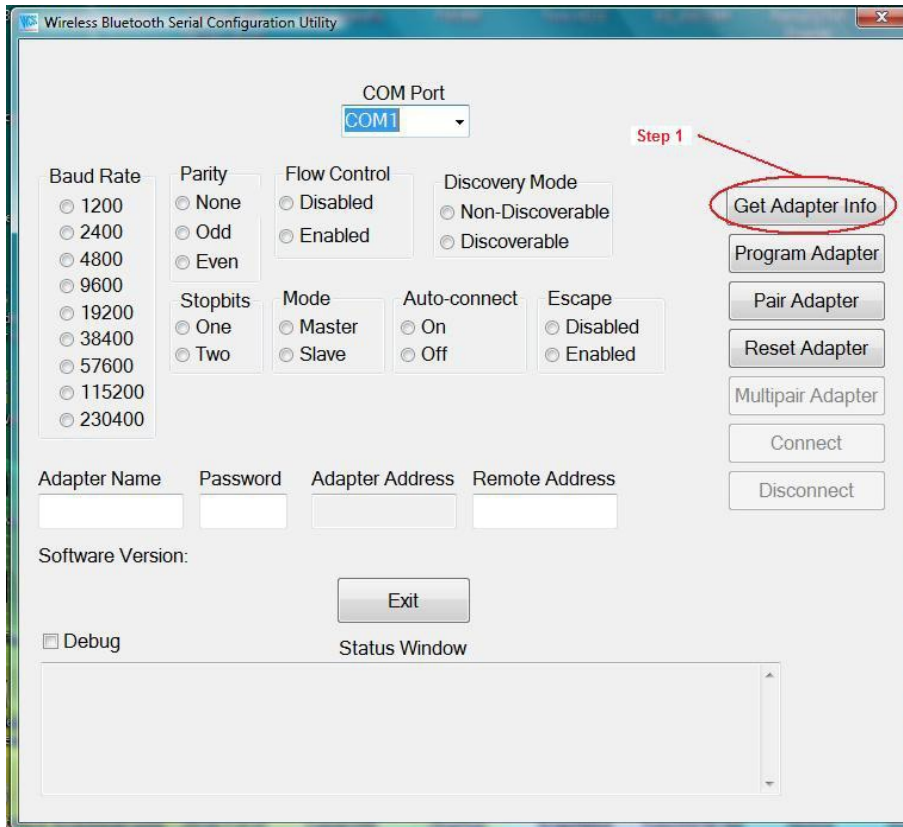
1. Attach the power adapter to the BTLINK.
2. Check that the slide switch is set to DCE. (DB9 connector side)
3. Plug it into a serial port on the PC (or via the « Serial to USB » adapter)
4. Download and install the GUI configuration program:

<http://www.wcscnet.com/Products/HdwBTRS232/ConfigBTRS232FreeSetup.msi>

5. Run the GUI configuration program.

6. Set the COM port appropriately (COM1) - if in doubt try different settings, one will work.

7. Using the button « Get Adapter Info » reads the current settings from the adapter. If it fails change the COM port setting, check that the slide switch is well set to DCE and try again !



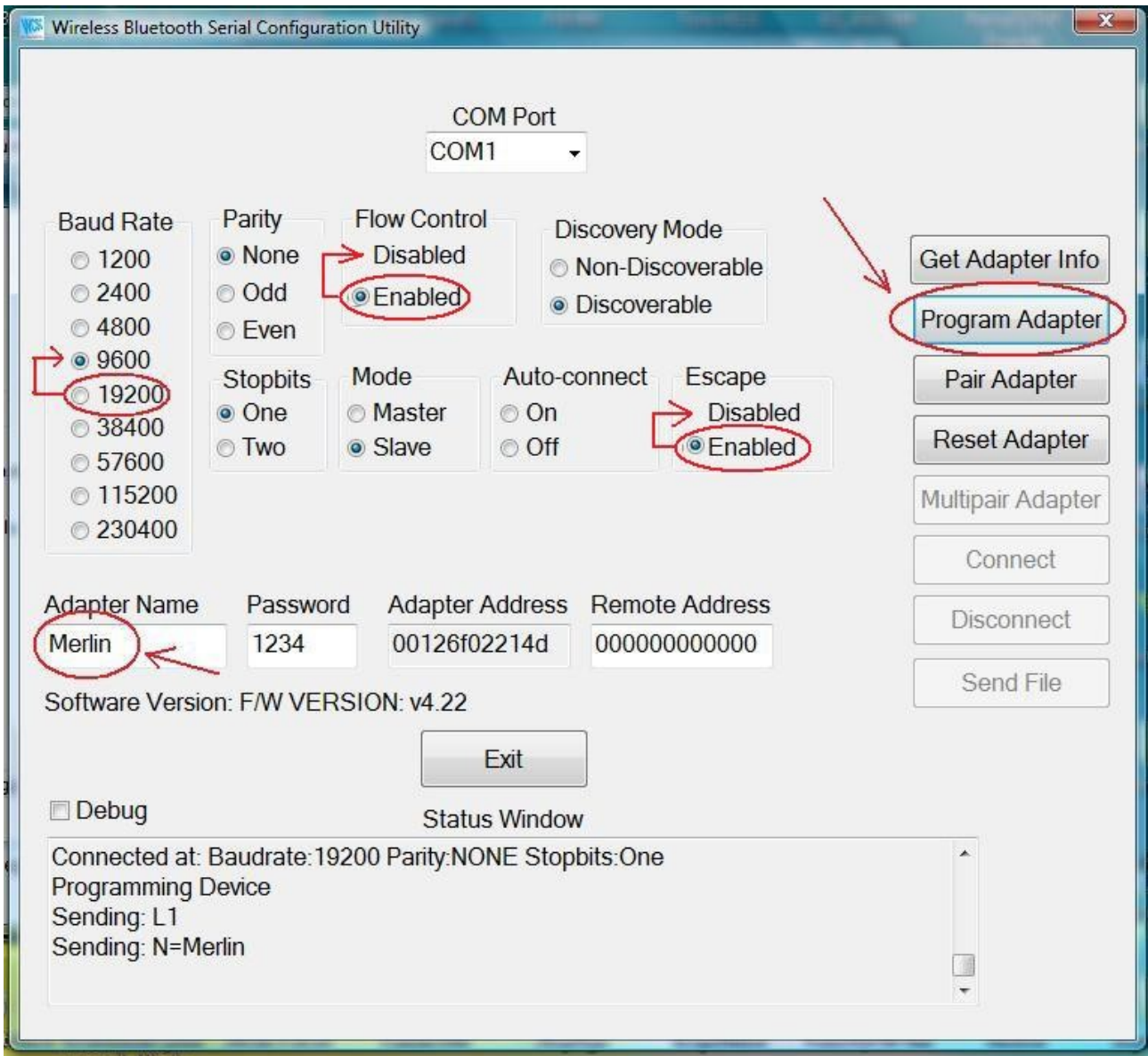
8. Change the settings to match those shown hereafter in the

**Summary of the "exact" configuration you should have for Merlin/Orion and Papywizard.**

You don't change the adapter ID that is programmed into the unit(Factory setting)!

*As an example*, we show hereafter some of the modifications we made in our particular case(in RED). You can also provide another name to the adapter if you wish - I named mine « MERLIN »!

9. Program new settings into the adapter using the button « Program Adapter ». The new settings will be retained until you reprogram the adapter again.



10. When completed click the button « Get Adapter info » again to be sure that the modifications have been taken into account ...

Then close the program, detach the adapter, detach the power cable from it.

11. Slide the switch from DCE to the other end. (Antenna side)
12. Connect the adapter to the RS232-TTL module using the gender changer supplied with the BTLINK adapter.
13. Plug the RS2323-TTL+RS2332-Bluetooth combo into the Merlin and away you go.

**Summary of the "exact" configuration you should have for  
Merlin/Orion and Papywizard:**

- **Baud Rate:** 9600
- **Parity:** None
- **Flow Control:** Disabled
- **Discovery Mode:** Discoverable
- **Stopbits:** One
- **Mode:** Slave
- **Auto-connect:** -----> left blank !
- **Escape:** Disabled
- **Adapter Name:** Your choice !
- **Password:** Your choice ! (but remember it!)
- **Adapter Address:** Could not be changed (factory preset)
- **Remote Address:** Don't change !